

Transmission Type....4R100

Rebuilder's Kwik Reference Guide



Clutch Clearances

Adjusted By:

Forward Clutch030-.055"	Snap Ring
Intermediate Clutch			
Direct Clutch045-.081"	Snap Ring
Low/Reverse Clutch			
Coast Overrun Clutch030-.050"	Snap Ring
Overdrive Clutch032-.058"	Snap Ring

Band Adjustment

Intermediate Band
2-4 Band
Low/Reverse Band
Overdrive Band

Torque Specifications

Pump Halves	18-23 Ft. Lbs.
Pump to Case	18-23 Ft. Lbs.
Valve Body	
Valve Body To Case	80-100 In. Lbs.
Chain Cover To Case	
Pan	10-12 Ft. Lbs.
Center Support Front Bolts	6-10 Ft. Lbs.
Center Support Rear Bolts	8-12 Ft. Lbs.
Extension Housing	30-40 Ft. Lbs.
Driven Sprocket Support	
Overdrive Support	
Chain Cover	
Forward Ban Servo Cover	
1 Way Clutch Race to Case	18-25 Ft. Lbs.
Accumulator Cover	
Turbine Sensor	70-88 In. Lbs.
Mount	60-80 Ft. Lbs.

Unit Endplays

Front Unit	
Middle Unit .032-.081"	Check Only.....
Rear Unit	
Differential	
Chain Sprocket	
Transfer Shaft	

Location

..... Not Adjustable

Selective

Transmission Type....4R100

Rebuilder's Kwik Reference Guide



Clutch & Band/Solenoid Application Chart

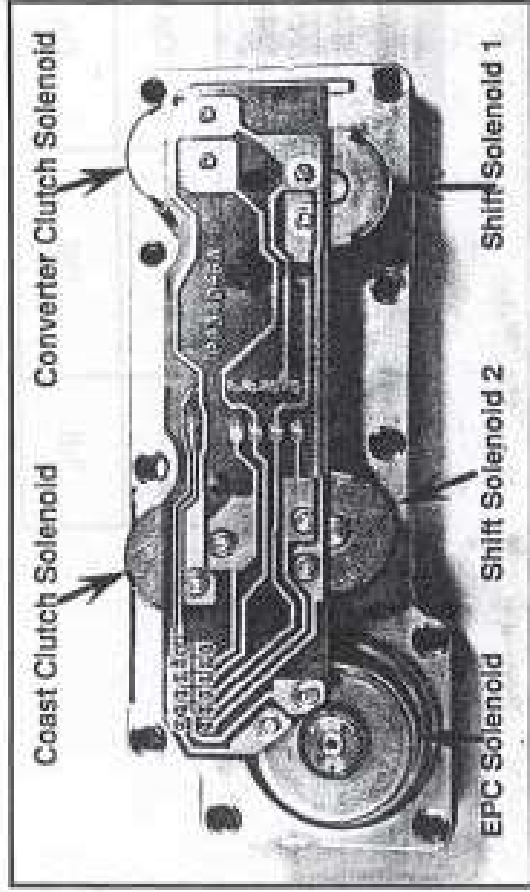
Gear	Intermediate Band	Coast Clutch	Overdrive Clutch	Intermediate Clutch	Direct Clutch	Forward Clutch	Reverse Clutch	OD 1-Way Drive Clutch		Intermediate 1-Way Drive Clutch		Low 1-Way Drive Clutch		Low 1-Way Coast Clutch	
								Applied	Holding	Applied	Overrunning	Applied	Overrunning	Applied	Overrunning
Reverse		Applied			Applied		Applied		Holding	Applied	Overrunning				
Over Drive	1st	Applied				Applied		Holding	Holding	Bypassed			Holding		Overrunning
	2nd	Applied		Applied		Applied		Holding	Holding	Bypassed	Overrunning		Overrunning		Overrunning
	3rd	Applied		Applied	Applied	Applied		Holding	Holding	Bypassed	Overrunning	Overrunning	Overrunning		Overrunning
	4th		Applied	Applied	Applied	Applied		Overrunning	Overrunning	Overrunning	Overrunning	Overrunning	Overrunning		Overrunning
Manual	1st	Applied				Applied	Applied	Holding	Holding	Applied			Holding		
	2nd	Applied		Applied		Applied	Applied	Holding	Holding	Applied	Band Applied		Overrunning		Overrunning

Solenoid Application Chart

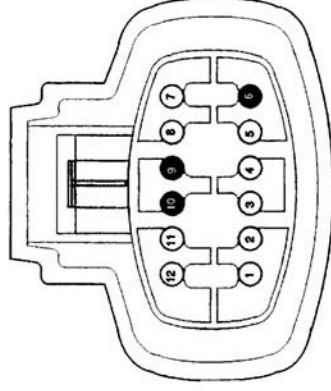
Gear	Shift Solenoid 1	Shift Solenoid 2	TCC Solenoid	CCS
1st	On	Off	Controlled by the PCM	Controlled by the PCM
2nd	On	On	Controlled by the PCM	Controlled by the PCM
3rd	Off	On	Controlled by the PCM	Controlled by the PCM
4th	Off	Off	Controlled by the PCM	Off

Transmission Type....4R100

Solenoid & Harness Information



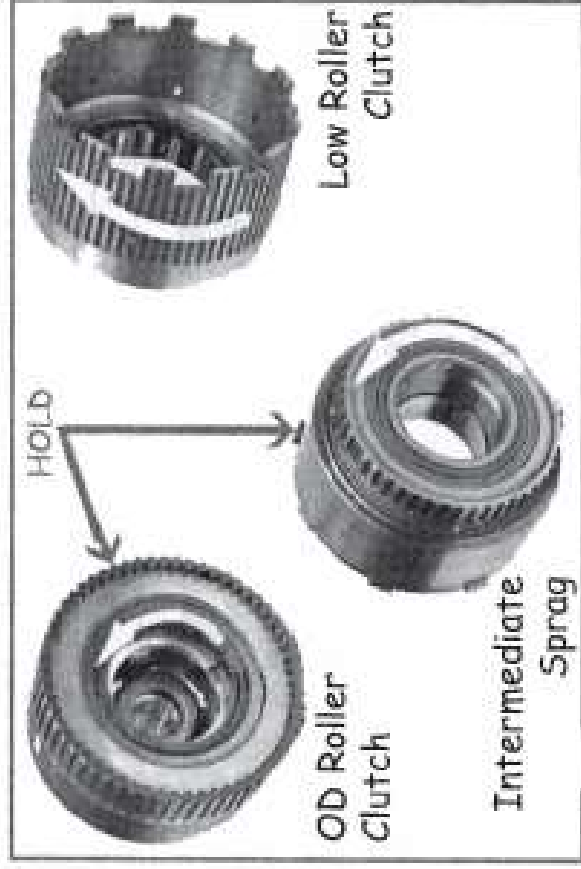
Rebuilder's Kwik Reference Guide



Solenoid Block Connector

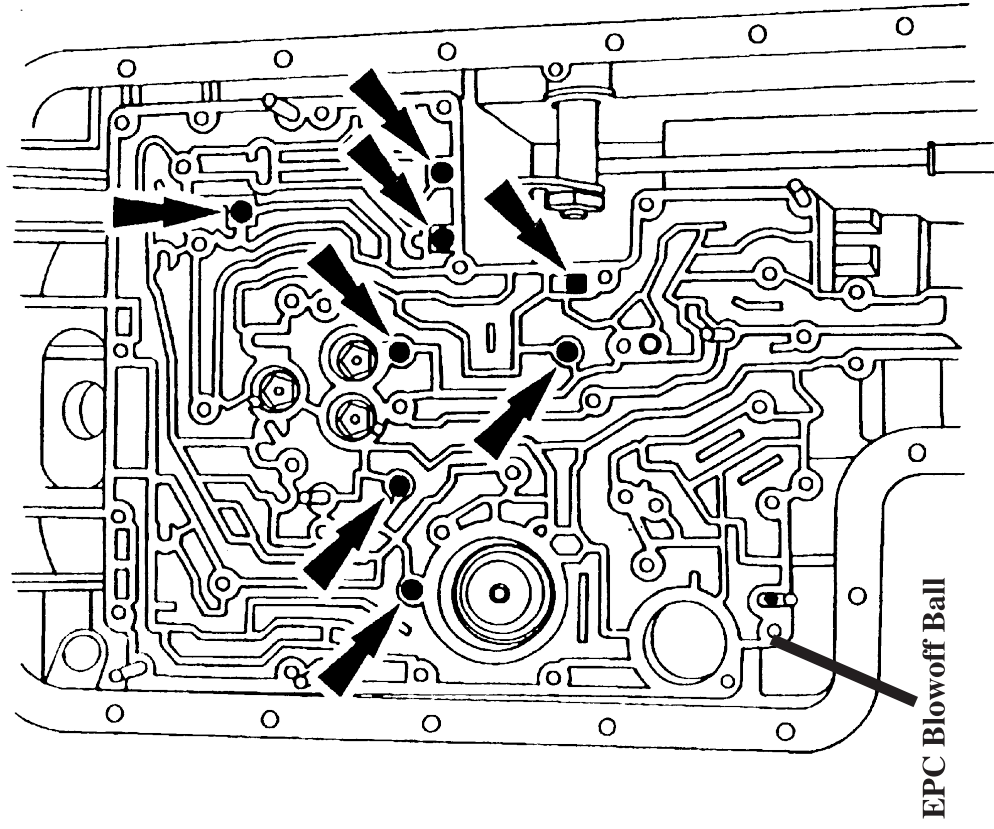
Terminal	Description	Resistance
1	Vehicle Power Feed	-
2	Shift Solenoid #2	20 - 30 Ohms
3	Shift Solenoid #3	20 - 30 Ohms
4	Converter Clutch Solenoid	20 - 30 Ohms
5	Coast Clutch Solenoid	20 - 30 Ohms
6	Not Used	-
7	Transmission Fluid Temperature (TFT) Sensor	-
8	Sensor Signal Return	-
9	Not Used	-
10	Not Used	-
11	EPC Solenoid	4 - 6.5 Ohms
12	EPC Solenoid	4 - 6.5 Ohms

Technical Tips For Rebuilding This Unit



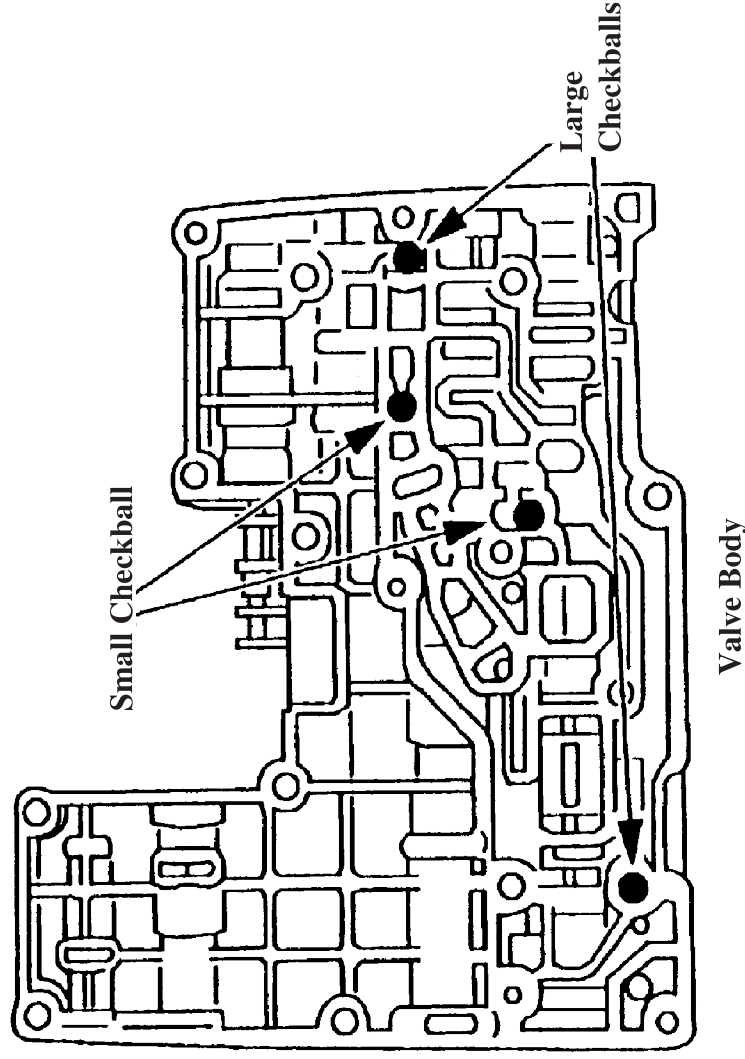
Transmission Type....4R100

Checkball Locations



Case (Rubber Checkballs)

Rebuilder's Kwik Reference Guide



Valve Body