



Mazda Whining Noise from Automatic Transaxle

File: Mazda
Date: September 2015

Whining Noise from Automatic Transaxle

VEHICLE APPLICATIONS INCLUDE:

2012-2014 Mazda3 with VINS produced before November 11, 2013

2013-2014 CX-5 with VINS produced before November 11, 2013

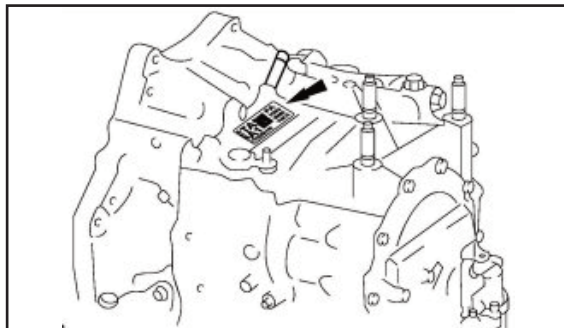
2014 Mazda6 with VINS produced before November 12, 2013

ISSUE: Some customers may complain of a whining noise from the automatic transaxle when driving at 10 mph and above. The noise:

- Depends on the vehicles speed only (the more speed, the more noise)
- Occurs with all types of driving (acceleration, deceleration, steady speed)
- Does not depend on rpm, gear, or ATF temperature

CAUSE: This is caused by a damaged bearing in the transaxle due to improper configuration of the transaxle case. A modification has now been implemented on automatic transaxles with the serial number 3TR1111680 and higher or 3TD1104906 and higher. The serial number can be found on top of the transaxle case near the manual shaft lever.

SOLUTION: A modification has now been implemented on automatic transaxles with the serial number 3TR1111680 and higher or 3TD1104906 and higher. The serial number can be found on top of the transaxle case near the manual shaft lever.



The following table shows how to decipher the serial number. Example 3TR1111680 is Nov 2013 production.

3	TR	11	11680
Year	Production line	Month	Number
1=2011		01=Jan	
2=2012		02=Feb	
3=2013		-	
4=2014		12=Dec	

Customers having this concern should have their vehicle repaired using the following repair procedure:

1. Verify Customer Concern
2. Replace the 6AT assembly with a new one according to MS3 online instructions or DIRECTECH PRO/ALLDATA
3. Verify repair.

Parts Information:

Description	Vehicle	Engine	Part Number	Qty.	Notes	
6AT SKYACTIV Assembly	2012-13 Mazda 3	PE (2.0L)	FWK1-03-000	1		
	2013 CX-5 (2WD)	PE (2.0L)	FWL1-03-000		9/6/2012 w/out kickdown switch	
	2013 CX-5 (4WD)	PE (2.0L)	FW7A-03-000			
	2013 CX-5 (2WD)	PE (2.0L)	FWLC-03-000		9/7/12-11/19/12 w/kickdown switch	
	2013 CX-5 (4WD)	PE (2.0L)	FW78-03-000			
	2014 CX-5 (2WD)	PE (2.0L)	FWL7-03-000			
	2014 CX-5 (4WD)	PE (2.0L)	FW7F-03-000			
	2014 CX-5 (2WD)	PY (2.5L)	FWH4-03-000			
	2014 CX-5 (4WD)	PY (2.5L)	FW7L-03-000			
					FWH3-03-000	w/out i-ELOOP
	2014 Mazda6	PY (2.5L)	FWH9-03-000			w/i-ELOOP
	2014 Mazda3 (VIN JM1)	PE (2.0L)	FWB2-03-000			
	2014 Mazda3 (VIN JM1)	PY (2.5L)	FWH1-03-000			
	2014 Mazda3 (VIN3MZ)	PE (2.0L)	FWT6-03-000			